

jainson
LED LIGHTS

**THE MOST
ADVANCED
AND EFFICIENT
FORM OF LIGHTING**



ABOUT US

INTRODUCTION

ABOUT JAINSON

JAINSON Switchgear's journey started in 1971 with the manufacturing of iron-clad main switches. Since then, we have witnessed significant growth and have overcome several business challenges associated with any evolving industry. We are the proud leaders in the manufacturing of cable terminal ends, crimping tools, and the entire range of switchgear products. We are committed to providing unmatched quality and services through our network of 250 dealers and 100 OEMs.

JAINSON has been steadily growing despite tough competition from global players in the Indian market. This fact is proof of our customer focus and our management expertise of more than 40 years! We will continue to bring innovation in the field of industrial manufacturing and thus remain pioneers in the years to come.

With our newest venture **JAINSON LED Lights**, we aim to light up the lives of our customers in an environmentally friendly manner.

JAINSON LED Lights: Lighting up your lives, EFFICIENTLY!

VISION

Our vision is to become the industry leaders through innovation, dedication, and commitment towards our work. We aim to provide our customers with only the best products to ensure unparalleled customer satisfaction.

MISSION

Our mission is to constantly challenge and improve ourselves so that we continue to raise the benchmark for industry performance. We measure our success not by the number of products we have sold but by the smiles of satisfaction we have put on our customers' faces.

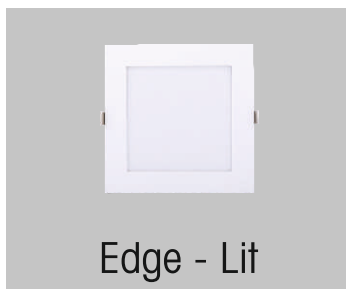


CONTENTS

PANEL LIGHT (SQUARE/ ROUND)	01
DOWN LIGHT (SQUARE/ ROUND)	02
COB	03
SUSPENDED	04
FLOOD LIGHT (CHORUS& ECO)	05
FLOOD LIGHT (SQUARE/ ROUND)	06
STREET LIGHT (ECO & BOAT)	07
STREET LIGHT (BRAHMA & YODHA)	08
WELL GLASS FITTING	09
HIGH BAY	10
2X2 PANEL LIGHT	11
BULK HEAD	12
SURFACE LIGHT	13
TUBE LIGHT	14
STRIP	15

PANEL LIGHT

SQUARE / ROUND



EDGE - LIT \ BACK - LIT

LED Color	Cool White, Neutral White, Warm White
CRI	80
Supply Voltage	240V AC / 50 Hz
System Wattage	4W, 8W, 12W, 15W, 18W, 21W, 24W
IP Rating	IP-20
Housing	Aluminium Pressure Die Cast
Warranty	2 Years
LED Driver	Included

EDGE - LIT

System Wattage	4W	8W	12W	15W	18W	21W	24W
CC Led Driver	12.8V/260mA	25.6V/260 mA	38.4V/260mA	51.2V/260mA	54.4V/300mA	38.4V/520mA	40.8V/600mA
System Lumen	480	960	1440	1920	2100	2880	3120
Cutout Dimensions ●	Ø70mm	Ø97mm	Ø137mm	Ø167mm	Ø167mm	Ø206mm	Ø206mm
Cutout Dimensions ■	Sq.70mm	Sq.97mm	Sq.137mm	Sq.172mm	Sq.172mm	Sq.200mm	Sq.200mm

BACK - LIT

System Wattage	4W	8W	12W	18W	24W	30W
CC Led Driver	12.8V/260mA	25.6V/260 mA	38.4V/260mA	54.4V/300mA	80V/300mA	100V/300mA
System Lumen	480	960	1440	2100	2800	4200
Cutout Dimensions ●	Ø85mm	Ø95mm	Ø125mm	Ø145mm	Ø175mm	
Cutout Dimensions ■	Sq.85mm	Sq.95mm	Sq.125mm	Sq.145mm	Sq.175mm	Sq.215mm

DOWN LIGHT

SQUARE / ROUND



DOWN LIGHT

LED Color	Cool White, Neutral White, Warm White
CRI	80
Supply Voltage	240V AC / 50 Hz
System Wattage	4W, 8W, 15W, 18W, 21W, 24W
IP Rating	IP-20
Housing	Aluminium Pressure Die Cast
Warranty	2 Years
LED Driver	Included

System Wattage	4W	8W	15W	18W	21W	24W
CC Led Driver	12.8V/260mA	25.6V/260 mA	51.2V/260mA	54.4V/300mA	38.4V/520mA	40.8V/600mA
System Lumen	480	960	1920	2080	2400	2880
Cutout Dimensions ●	Ø85mm	Ø86mm	Ø145mm	Ø145mm	Ø175mm	Ø175mm
Cutout Dimensions ■	Sq.85mm	Sq.95mm	Sq.145mm	Sq.145mm	Sq.175mm	Sq.175mm

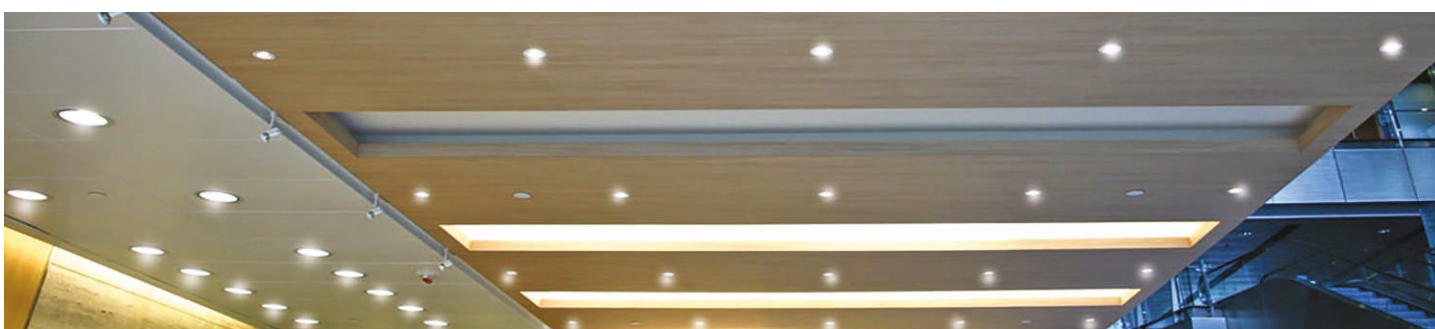




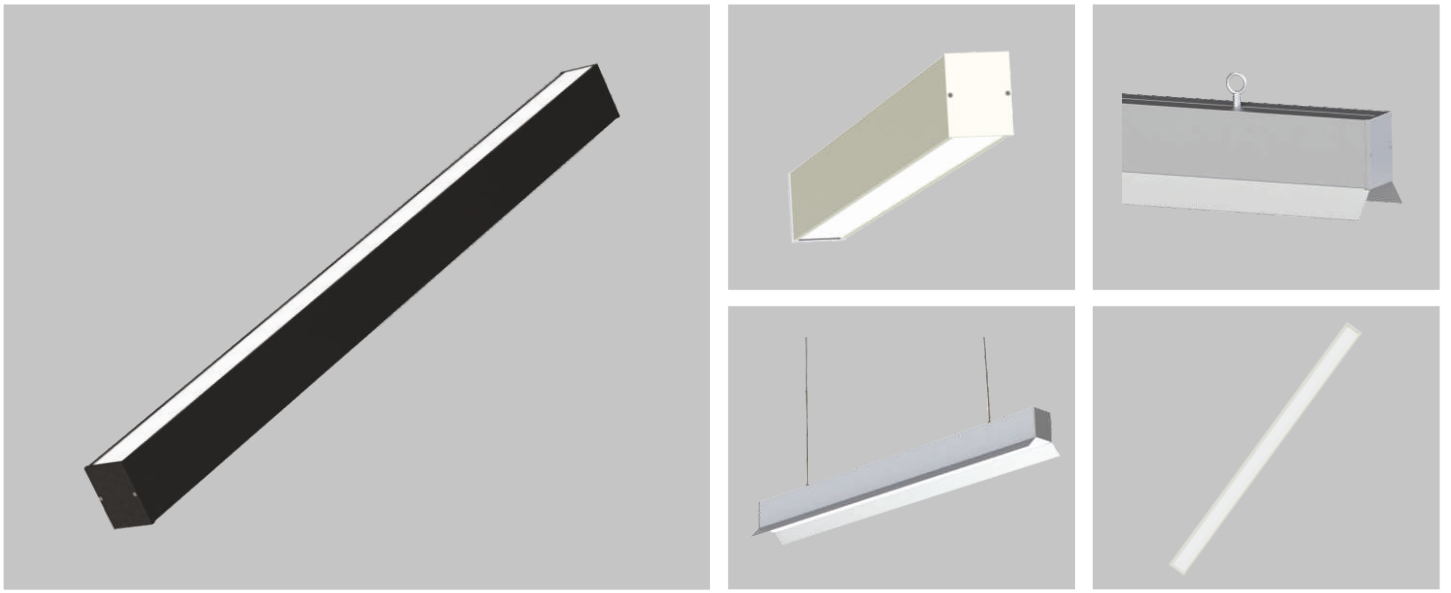
COB DOWNLIGHT

COB Color	Cool White, Neutral White, Warm White
CRI	80 / 90 On Request
Supply Voltage	240V AC / 50 Hz
System Wattage	4W, 9W, 12W, 15W, 18W, 24W, 36W
Beam Angle	24°, 40°, 60°
IP Rating	IP-20
Housing	Aluminium Pressure Die Cast
Warranty	2 Years
LED Driver	Included

System Wattage	3W	6W	9W	12W	18W	24W	36W
CC Led Driver	12V/250mA	18V/300 mA	37V/220mA	37V/300mA	37V/450mA	37V/580mA	36V/1000mA
System Lumen	480	840	1260	1680	2520	3360	5040
Cutout Dimensions	ø70mm	ø86mm	ø86mm	ø110mm	ø110mm	ø132mm	ø154mm
Outer Dimensions ● ■	Sq. 90mm	Sq. 102mm	Sq. 102mm	Sq. 125mm	Sq. 125mm	Sq. 148mm	Sq. 171mm



SUSPENDED



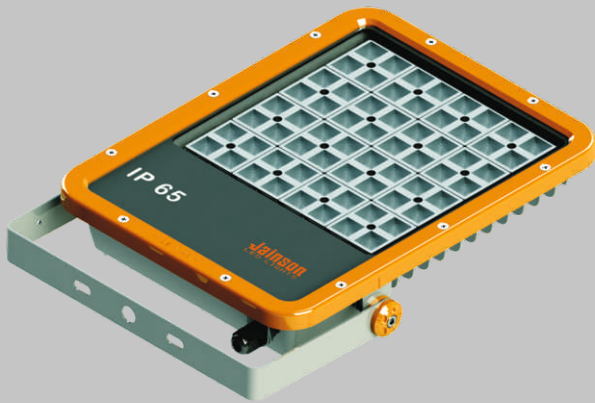
SUSPENDED LIGHT

LED Color	Cool White, Neutral White, Warm White
CRI	80
Supply Voltage	240V AC / 50 Hz
System Wattage	20W, 25W, 30W, 45W, 60W (Special wattage against order)
System Lumen	110 Lm Per Watt
IP Rating	IP-20
Housing	Aluminium Extrusion
Warranty	2 Years
LED Driver	Included



FLOOD LIGHT

CHORUS & ECO

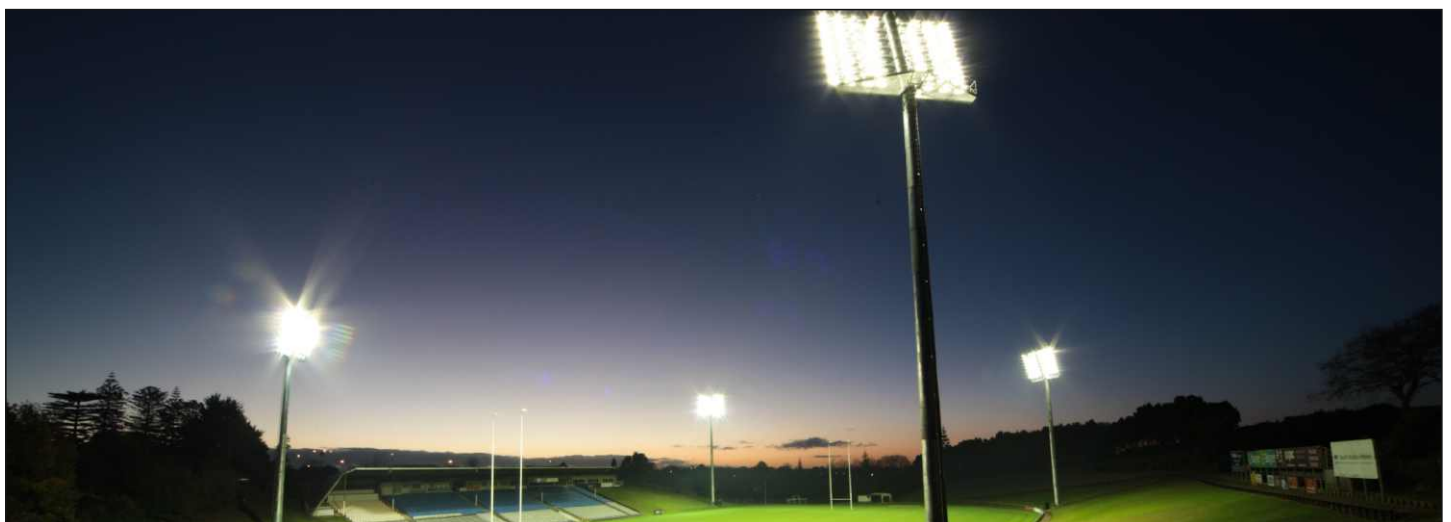


Chorus



Eco

Flood Light	Chorus	Eco
LED Color	CW, NW, WW	CW, NW, WW
CRI	80	80
Supply Voltage	240V AC / 50 Hz	240V AC / 50 Hz
System Wattage	20W, 45W, 75W	25W, 50W, 75W, 90W
System Lumen	110 Lm Per Watt	110 Lm Per Watt
Beam Angle	60°	120°
IP RATING	IP-65	IP-65
Housing	Aluminium Pressure Die Cast	Aluminium Pressure Die Cast
Warranty	2 Years	2 Years
LED Driver	Included	Included



FLOOD LIGHT

SQUARE / ROUND



Agni



Antrix

Flood Light	Agni	Antrix
LED Color	CW, NW, WW	CW, NW, WW
CRI	80	80
Supply Voltage	240V AC / 50 Hz	240V AC / 50 Hz
System Wattage	30W, 60W, 90W, 150W 200W, 400W	60W, 90W, 150W 220W
System Lumen	110 Lm Per Watt	110 Lm Per Watt
Beam Angle	120°	45°, 70°
IP RATING	IP-65	IP-65
Housing	Aluminium Pressure Die Cast	Aluminium Pressure Die Cast
Warranty	2 Years	2 Years
LED Driver	Back Mounted	Back Mounted

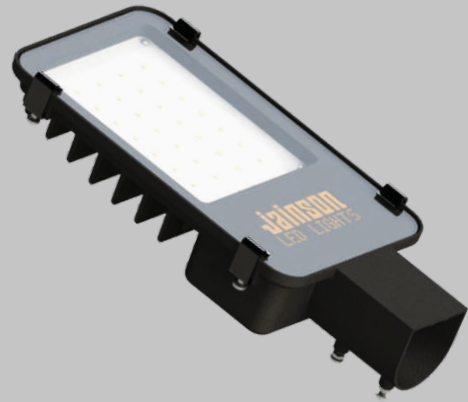


STREET LIGHT

ECO & BOAT



Boat



Eco

STREET LIGHT	Boat	Eco
LED Color	CW, NW, WW	CW, NW, WW
CRI	80	80
Supply Voltage	240V AC / 50 Hz	240V AC / 50 Hz
System Wattage	20W, 30W, 60W	15W, 24W, 30W, 48W, 60W
System Lumen	110 Lm Per Watt	110 Lm Per Watt
Beam Angle	120°	120°
IP RATING	IP-65	IP-65
Housing	Aluminium Pressure Die Cast	Aluminium Pressure Die Cast
Warranty	2 Years	2 Years
LED Driver	Included	Included



STREET LIGHT

BRAHMA & YODHA



Brahma



Yodha

STREET LIGHT	Brahma	Yodha
LED Color	CW, NW, WW	CW, NW, WW
CRI	80	80
Supply Voltage	240V AC / 50 Hz	240V AC / 50 Hz
System Wattage	15W, 24W, 30W, 42W, 60W, 72W, 90W, 120W	18W, 30W, 48W, 60W, 72W, 90W, 120W
System Lumen	110 Lm Per Watt	110 Lm Per Watt
Beam Angle	120°	ESNA Type I, Type II
IP RATING	IP-65	IP-65
Housing	Aluminium Pressure Die Cast	Aluminium Pressure Die Cast
Warranty	2 Years	2 Years
LED Driver	Included	Included



WELL GLASS FITTING

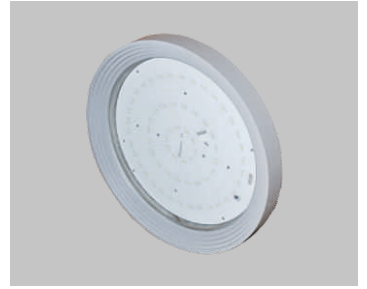
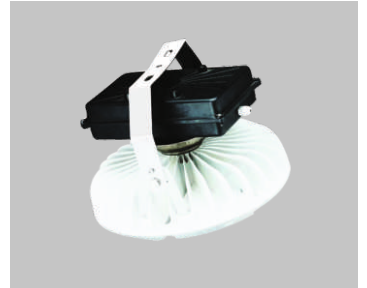
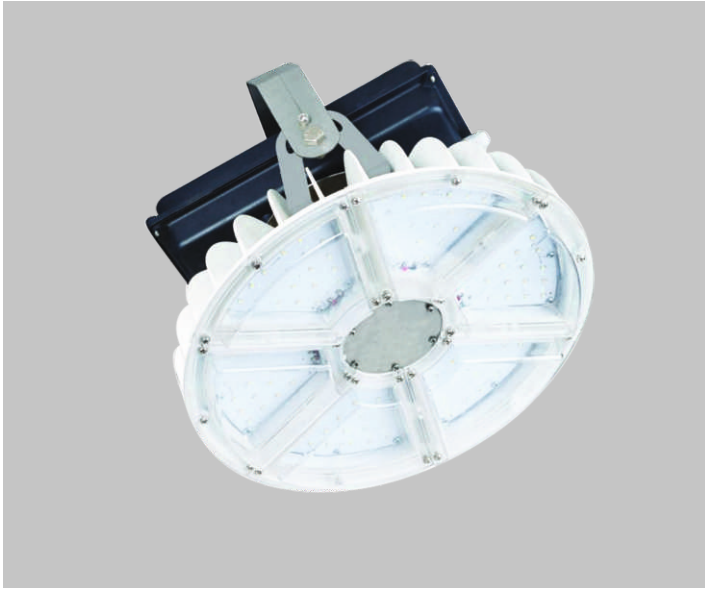


WELL GLASS FITTING

LED Color	Cool White, Neutral White, Warm White
CRI	80
Supply Voltage	240V AC / 50 Hz
System Wattage	24W, 40W, 50W, 80W
System Lumen	110 Lm Per Watt
Beam Angle	General Light Spread
IP Rating	IP-66
Housing	Aluminium Pressure Die Cast
Warranty	2 Years
LED Driver	Included

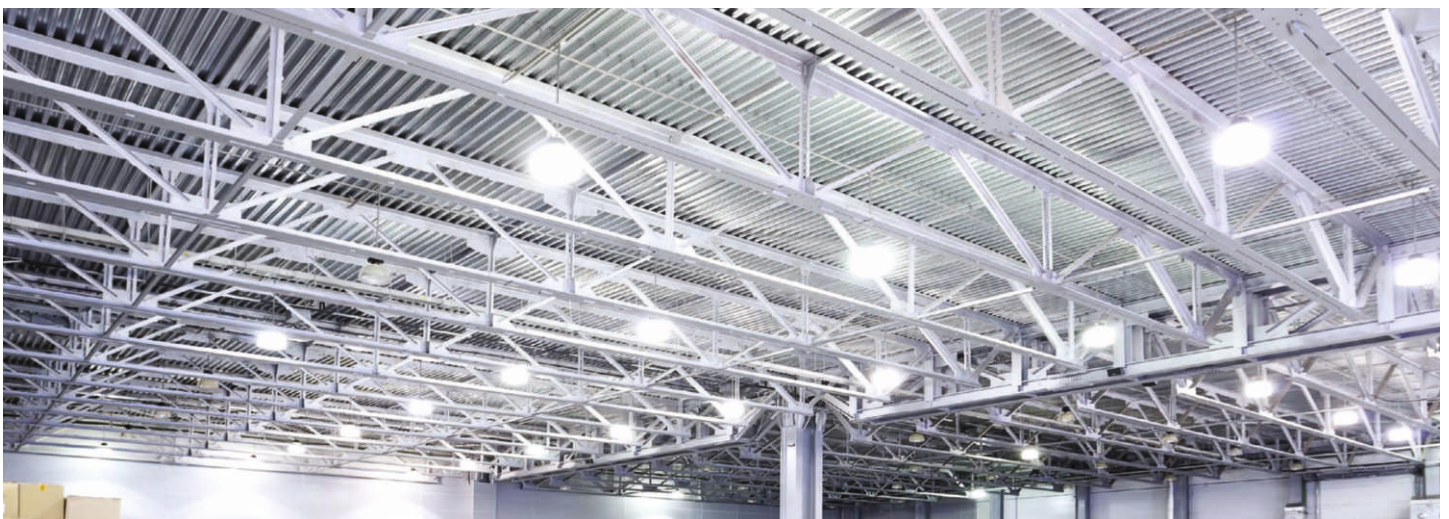


HIGH BAY LIGHT



HIGH BAY LIGHT

LED Color	Cool White, Neutral White, Warm White
CRI	80
Supply Voltage	240V AC / 50 Hz
System Wattage	30W, 50W, 80W, 120W, 150W
System Lumen	110 Lm Per Watt
Beam Angle	36°, 60°, 120°
IP Rating	IP-65
Housing	Aluminium Pressure Die Cast
Warranty	2 Years
LED Driver	Included

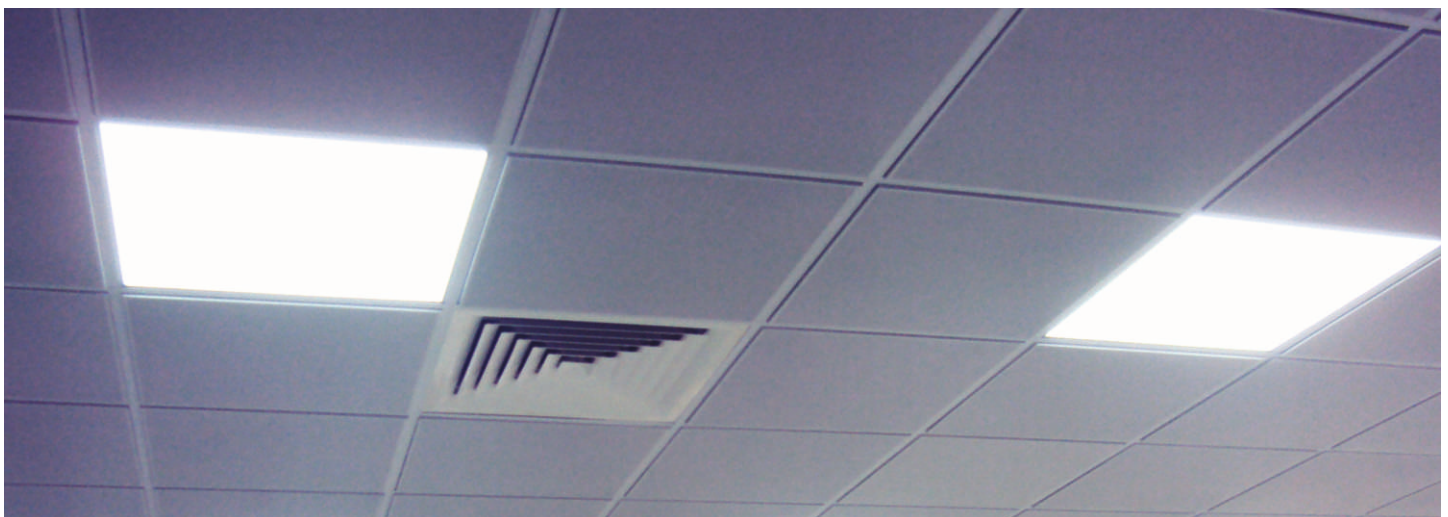


2x2 PANEL LIGHT



2x2 PANEL LIGHT

LED Color	Cool White, Neutral White, Warm White
CRI	80
Supply Voltage	240V AC / 50 Hz
System Wattage	36W, 45W
System Lumen	110 Lm Per Watt
IP Rating	IP-20
Housing	Aluminium Pressure Die Cast / Sheet metal fabrication
Warranty	2 Years
LED Driver	Included



BULK HEAD

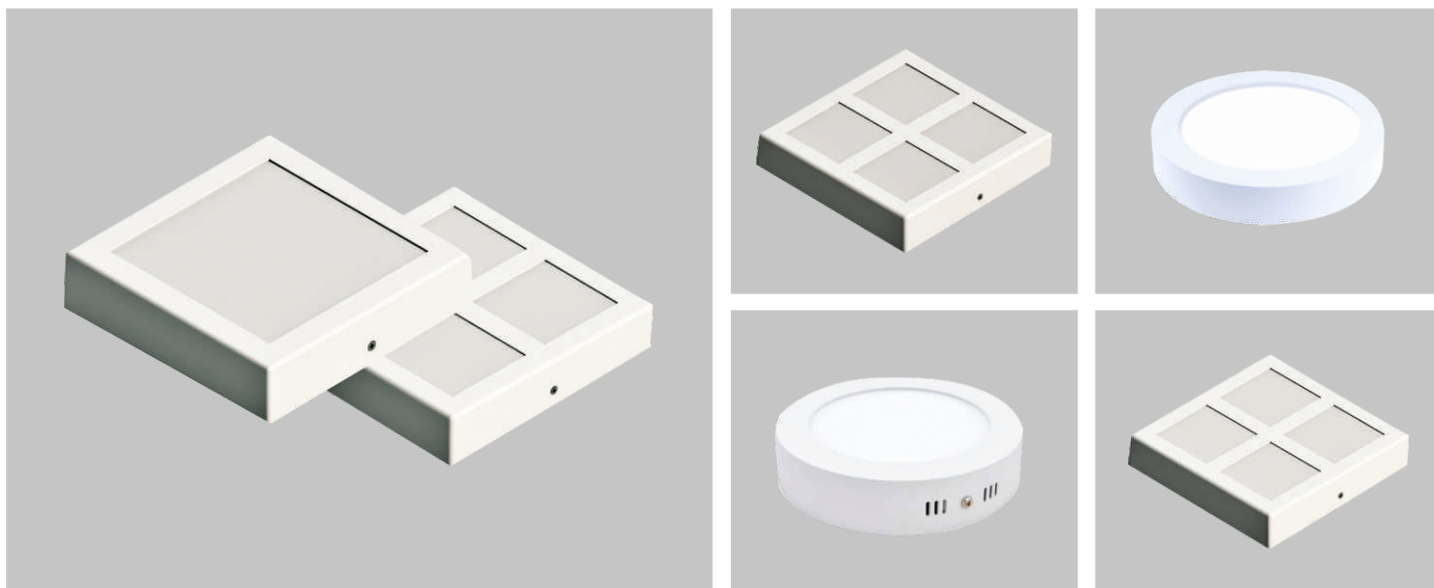


BULK HEAD LIGHT

LED Color	Cool White, Neutral White, Warm White
CRI	80
Supply Voltage	240V AC / 50 Hz
System Wattage	8W, 10W, 15W
System Lumen	110 Lm Per Watt
IP Rating	IP-65
Housing	Aluminium Pressure Die Cast / Plastic Moulded
Warranty	2 Years
LED Driver	Included

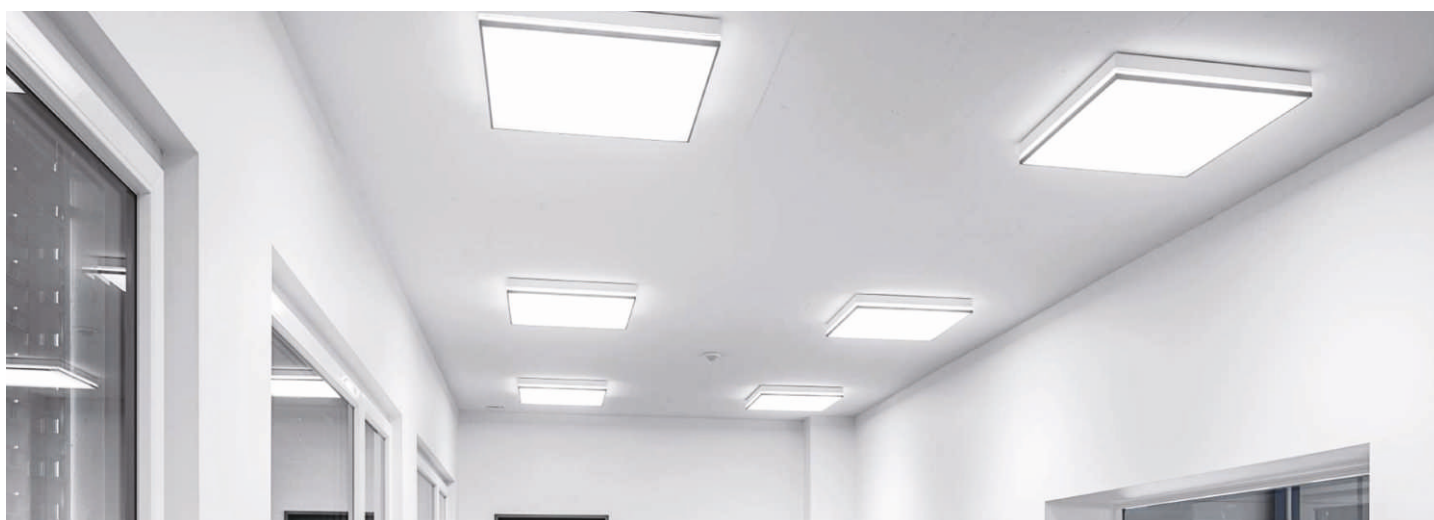


SURFACE LIGHT



SURFACE LIGHT

LED Color	Cool White, Neutral White, Warm White
CRI	80
Supply Voltage	240V AC / 50 Hz
System Wattage	8W, 15W, 21W, 30W, 48W
System Lumen	110 Lm Per Watt
IP Rating	IP-65
Housing	Aluminium Pressure Die Cast / Plastic Moulded
Warranty	2 Years
LED Driver	Included



TUBE LIGHT

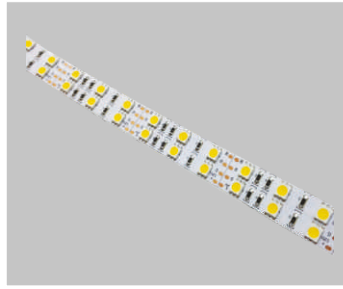
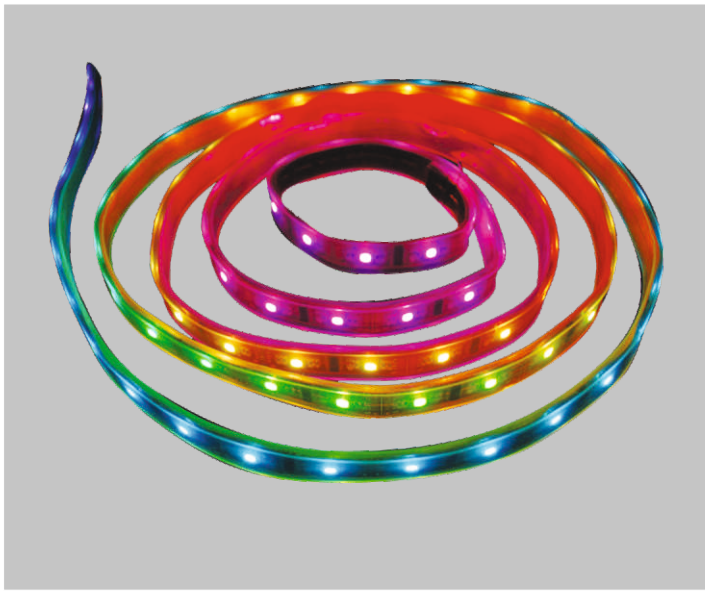


TUBE LIGHT

LED Color	Cool White, Neutral White, Warm White
CRI	80
Supply Voltage	240V AC / 50 Hz
System Wattage	T5-2ft 9W, 4ft 18W
	T8-2ft 9W, 4ft 24W
IP Rating	IP-20
Housing	Aluminium
Warranty	2 Years
LED Driver	Included



STRIP



STRIP LIGHT

LED Color	Cool White, Neutral White, Warm White
CRI	80
Supply Voltage	12V DC - 1000 mA per mtr
System Wattage	60 LED 10W per mtr. 120 Led 20W per mtr
IP Rating	IP 20 / IP-65
LED	2835 / 5050
Warranty	1 Year
LED Driver	Extra



NOTES

USING LED CHIPS & DRIVERS FROM:

PHILIPS

OSRAM

FULHAM

 BRIDGELUX

 **LUMILEDS**



jainson

LED LIGHTS

DOWN LIGHT BULK HEAD
COB
STREET LIGHT
2X2 PANEL LIGHT
FLOOD LIGHT TUBE LIGHT
DOWN LIGHT
2X2 PANEL LIGHT
SUSPENDED
PANEL LIGHT
FLOOD LIGHT COB
SURFACE LIGHT
COB HIGH BAY BULK HEAD
TUBE LIGHT
STRIP SURFACE LIGHT
STREET LIGHT COB

JAINSON SWITCHGEAR PRODUCTS

14, Agarwal Industrial Estate, S.V. Road

Dahisar (E), Mumbai - 400 068

Tel.: 022-2848 9250

Email: info@jainsonledlights.com

W: www.jainsonledlights.com

Authorised Distributor / Dealer